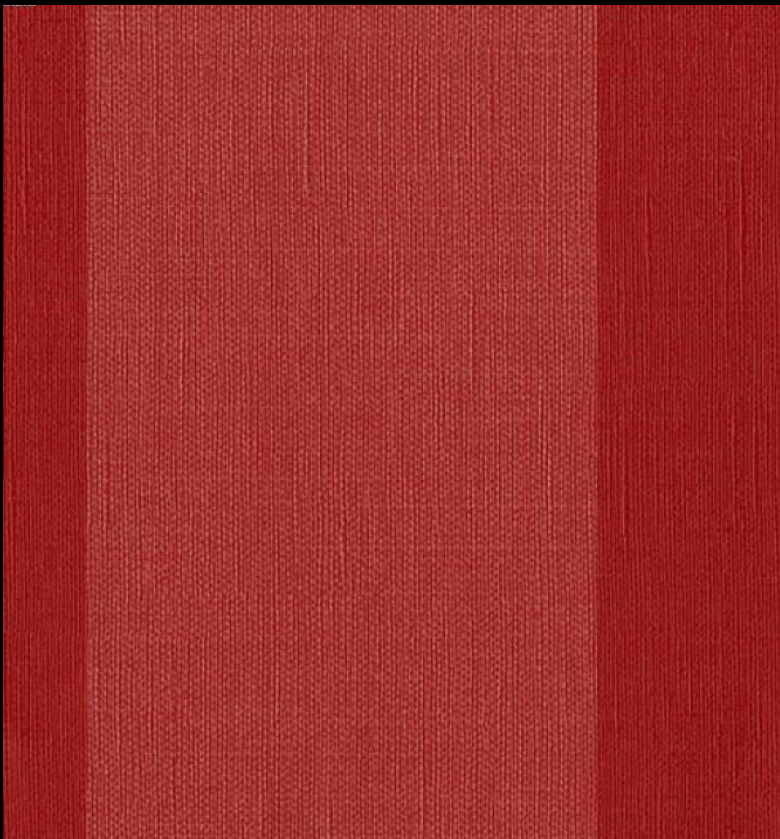


For further information please contact customer services on 03705 117 118.



PRODUCT DETAILS

Design Name:	Palma Stripe
Code:	01S92
Colour Description:	Red
Width:	130 cm
Length:	30 m
Sold By:	Per linear metre
Construction Type:	Fabric backed Vinyl
Backer:	Non woven polyester
Weight:	410 gsm
Fire rating:	Euro Class B

CLEANABILITY



Extra Scrubbable

MARINE RATED



IMO

LIGHTFASTNESS



Excellent.
(7 out of 8 to BSEN20105)

VOC RATED

A+

CE COMPLIANT



CONTAINS BIOCIDES



HANGING INFORMATION

Pattern repeat:	0cm
Pattern offset:	0cm
Pattern overlap:	16cm
Recommended Adhesive:	Murabond Heavy. On dry lining use Murabond Easy Strip. On sealed surfaces use Murabond Sealed Surface Adhesive. For other surfaces contact Customer Services on 03705 117 118.

Available colourways in this design

To view the full range of colourways available in this design, please search 'Palma Stripe' using the search function tool on the Muraspec website.



OVERLAP & TRIM



REVERSE HANG



RANDOM MATCH



PASTE TO WALL